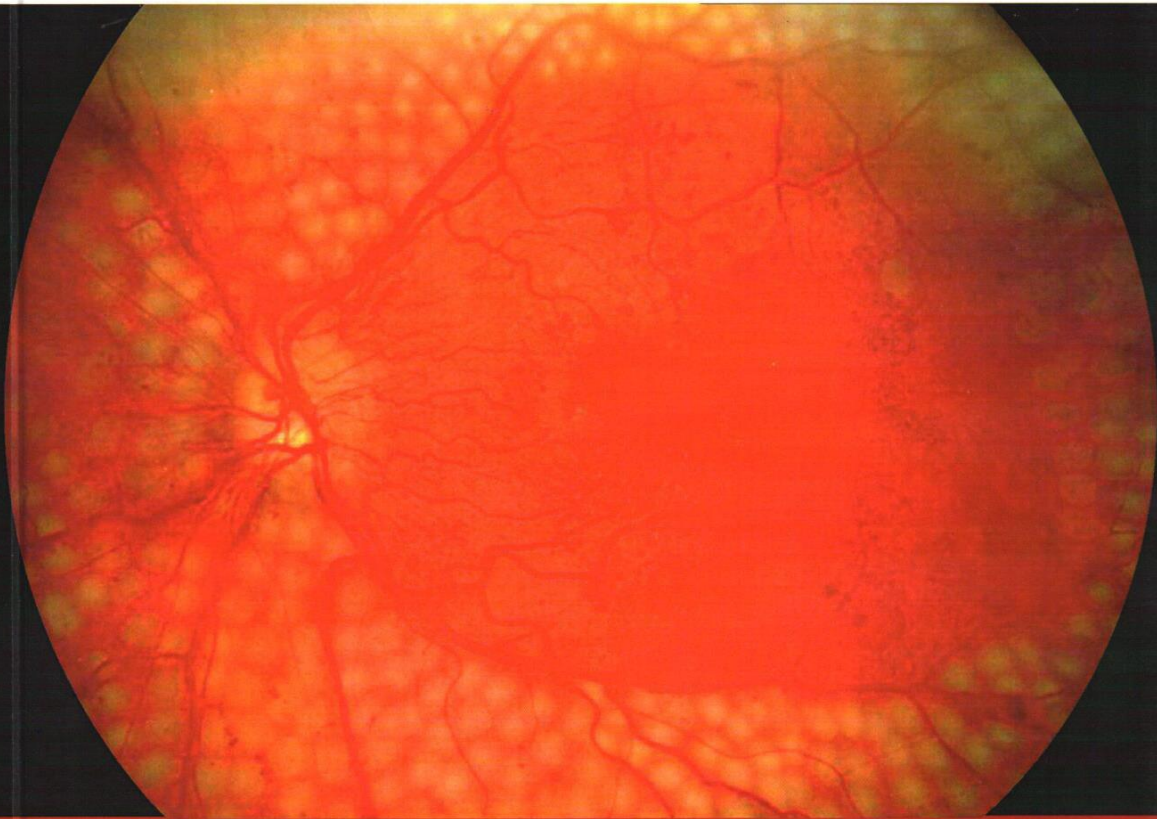


Understanding
Bio-Medical Image Processing
Using **MATLAB**



Ramesh Manza, Manjiri B. Patwari,
Yogesh M. Rajput & Deepali Rathod

Understanding Bio-Medical Image Processing Using MATLAB

Chapter 1 Introduction to biomedical image processing

- 1. Introduction
 - 1.1 Biomedical Image Processing
 - 1.2 Biomedical imaging
 - 1.3 Importance of biomedical imaging
 - 1.4 Diabetic Retinopathy
 - 1.5 Glaucoma
 - 1.6 Different Types of Glaucoma
 - 1.7 Conclusion
 - 1.8 References

Chapter 2 Introduction to Diabetic Retinopathy

- 2.1 Introduction to Diabetes
 - 2.1.1 Types of Diabetes
 - 2.1.1.1 Type 1 Diabetes
 - 2.1.1.2 Type 2 Diabetes
 - 2.1.1.3 Pre-diabetes
 - 2.1.1.4 Gestational diabetes
 - 2.1.1.5 Neonatal diabetes
 - 2.1.1.6 Alström Syndrome
 - 2.1.1.7 Wolfram Syndrome
- 2.2 Anatomy of Human Eye
- 2.3 Image Formation
- 2.4 Introduction to Diabetic Retinopathy
 - 2.4.1 Background Diabetic Retinopathy
 - 2.4.2 Pre-proliferative or Non- Proliferative Diabetic Retinopathy (NPDR)
 - 2.4.2.1 Mild non-proliferative retinopathy

2.4.2.2 Moderate non-proliferative retinopathy

2.4.2.3 Severe non-proliferative retinopathy

2.4.3 Proliferative retinopathy

2.5 Diabetic Retinopathy Lesions

2.5.1 Background Diabetic Retinopathy

2.5.1.1 Microaneurysms

2.5.1.2 Hemorrhage

2.5.1.3 Hard Exudates

2.5.2 Pre-proliferative Diabetic Retinopathy or Non-Proliferative Diabetic Retinopathy (NPDR)

2.5.2.1 Vascular changes

2.5.2.2 Dark blot haemorrhage

2.5.2.3 Multiple cotton-wool spots

2.5.2.4 Intraretinal microvascular abnormalities

2.5.3 Proliferative Diabetic Retinopathy

2.5.3.1 Neovascularization

2.5.3.2 Vitreous detachment

2.5.3.3 Haemorrhage

2.6 Manual detection methods for Diabetic Retinopathy Lesions

2.7 Drawbacks of manual techniques

2.8 Need of the research

2.9 Significance of this work

2.10 Information of database

2.10.1 Saswade Fundus Image Database

2.9.1.1 Fundus camera

2.10.2 STARE

2.10.3 DRIVE

2.10.4 DIARETDB0

2.10.5 DIARETDB1

2.10.6 HRF

2.11 Conclusion

2.12 References

Chapter 3: Experiments for detection of diabetic retinopathy

3.1 Experiment 1: Localization of optic disc using speed-up robust feature:

3.1.1 Work flow for localization of optic disc

3.1.2 Methodology for Localization of optic disc using speed up robust feature

3.1.2.1 Green Channel Extraction

3.1.2.2 Histogram Equalization

3.1.2.3 Speed up robust feature

3.1.3 Result for Localization of Optic Disc Using Speed-up Robust Feature

3.1.4 Conclusion

3.1.5 Graphical User Interface for Localization of Optic Disc Using Speed up Robust Feature

3.2 Experiment 2: Localization of optic disc and macula using multilevel 2-d wavelet decomposition based on haar wavelet transform

3.2.1 Work Flow for Localization optic Disc and Macula

3.2.2 Methodology for localization of optic disc and macula using Multi-level 2D wavelet Decomposition

3.2.2.1 Multilevel 2D wavelet Decomposition

3.2.2.2 Speed up robust feature

3.2.3 Result of localization of optic disc and macula using Multi-level 2D wavelet Decomposition

3.2.4 Conclusion

3.2.5 Graphical User Interface for Localization of optic disc and macula using multi-level 2-D wavelet decomposition

3.3 Experiment 3: Retinal blood vessels extraction using top-hat filter on high resolution fundus image database

3.3.1 Work flow for retinal blood vessels extraction using top-hat filter

3.3.2 Methodology for retinal blood vessels extraction using top-hat filter

3.3.2.1 Contrast Limited Adaptive Histogram Equalization (CLAHE)

3.3.2.2 Morphological Open Operation

3.3.2.3 TOP-HAT Transform

3.3.2.4 Skeletonization

3.3.2.5 Fractal Dimension

3.3.3 Results for retinal blood vessels extraction using Top-hat filter:

3.4 Experiment 4: Retinal blood vessels extraction using 2-d matched filter on high resolution fundus image database

3.4.1 Work flow of retinal vessel extraction using Matched Filter

3.4.2 Methodology for retinal vessel extraction using Matched Filter

3.4.2.1 Matched Filter

3.4.3 Result for retinal vessel extraction using Matched Filter

3.4.4 Output of blood vessel extraction using matched filter and top-hat filter on HRF database

3.4.5 Output of blood vessel skeletonization using matched filter and top-hat filter on HRF database

3.5 Experiment5. Detection of microaneurysms

3.5.1 Workflow for detection of microaneurysms

3.5.1.1 Mask Separation

3.5.1.2 Image Enhancement

3.5.1.3 Histogram equalization

3.5.1.4 Removal of Optic Disc from Fundus Images

3.5.1.5 Detection of Microaneurysms

3.5.2 Result for detection of Microaneurysms

3.6 Experiment 6: Detection of hemorrhages

3.6.1 Methodology for detection of hemorrhages

3.6.1.1 Detection of hemorrhages

3.6.2 Results for detection of Hemorrhages

3.7 experiment 7: Detection of exudates

3.7.1 Workflow for detection of exudates

3.7.1.1 Detection of Exudates

3.7.2 Results for detection of Exudates

3.8 Experiment 8: Extractions of retinal blood vessels

3.8.1 Work flow for extraction of retinal blood vessels

3.8.1.1 Extraction of Retinal Blood Vessels

3.8.2 Result for extraction of retinal blood vessels

3.9 Grading NPDR Lesions using Artificial Neural Network

3.9.1 K-Means Clustering

3.9.2 Receiver Operating Characteristic Curve

3.10 Output for all lesions

3.10.1 Output for Microaneurysms

3.10.2 Output for of Hemorrhages

3.10.3 Output for Exudates

3.10.4 Output for retinal blood vessel extraction:

3.11 References

3.12 References

Chapter 4: Introduction to Glaucoma

4.1. Introduction

4.1.1 Optic disc

4.1.2 The Cup

4.1.3 Retinal Nerve Fiber Layer

4.1.4 Optic Nerve Head

4.1.5 Glaucoma

4.1.5.1 Different Types of Glaucoma

4.1.5.1.2 Open-Angle Glaucoma

4.1.5.1.3 Angle-Closure Glaucoma

4.1.5.1.3 Normal-Tension Glaucoma (NTG)

4.1.5.1.4 Congenital Glaucoma

4.1.5.1.5 Pigmentary Glaucoma

4.1.5.1.6 Neovascular Glaucoma

4.1.6 Detecting Glaucoma

4.1.6.1 Ophthalmoscopy

4.1.6.2 Perimetry

4.1.6.3 Gonioscopy

4.1.6.4 Tonometry

4.1.6.5 Pachymetry

4.1.7 Glaucoma Symptoms

4.2 Need of this Research:

4.3 Significance of the work:

4.4 About Database

4.4.1 DRIONS-DB

4.4.2 RIM-I Database

4.5 Conclusion

4.6 References

Chapter 5 Experimental Part for detection of Glaucoma

5.1 Introduction

5.2 Experiment1. Detection of glaucoma using cup to disc ratio

5.2.1 Workflow for detection of glaucoma using cup to disc ratio

5.2.2 Methodology

5.2.2.1 Intensity transformation &Threshold Image

5.2.2.2 Boundary setting

5.2.2.3 Crop Image

5.2.3 Results from DRIONS-DB Data Base: (Glaucomatous):

5.2.3.1 Area of optic cup & Area of optic disc.

5.2.3.2 CDR (cup to disc ratio) & Normalization

5.2.4 Results from RIM-I Data Base

5.2.4.1 Area of optic cup & Area of optic disc.

5.2.4.2 CDR (cup to disc ratio) & Normalization

5.3 classification

5.3.1 Knn (K- nearest neighborhood)

5.3.2 K-means (Classification).

5.3.2.1 K-means (Fitting).

5.3.2.2 K-means (Clustering)

5.4 conclusion

5.5 Experiment 2: Extraction of retinal nerve fiber layer for detection of glaucoma:

5.5.1 Proposed Algorithm

5.5.2 Extraction of RNFL

5.5.3 Methodology:

5.5.3.1 Optic Disk Remove

5.5.3.2 2D Median Filter

5.5.3.3 Grey Threshold

5.5.3.4 HAAR Wavelet:

5.5.3.5 Retinal Nerve Fiber Layer Extraction:

5.5.3.5.1 Extraction of Arteries:

5.5.3.5.2 Extraction of Veins:

5.5.3.5.3 Extraction of Capillaries:

5.5.4 Table of Extraction of RNFL from Healthy patient database HRF

5.5.5 Table of Extraction of RNFL from Glaucomatous patient database DRISHTI-GS

5.5.6 Table of Extraction of RNFL'S from Combination of HRF and DRISHTI-GS database

5.5.7 Results of Extraction of RNFL'S

5.5.7.1 Extraction of Arteries Result

5.5.7.2 Extraction of Veins Result:

5.5.7.3 Extraction of Capillaries Result:

5.5.8 Output Results of Extraction of RNFL'S:

5.6 Classification

5.6.1 K-nearest neighbor's algorithm

5.6.2 Support Vector Machine Classification:

5.7 Conclusion

5.8 References

Chapter 6 Coding

6.1 Introduction MATLAB

6.2 Image Preprocessing

6.3 Extraction of Fundus Image Mask

6.4 Localization of Optic Disc

6.5 Extraction of Macula

6.6 Extraction of Blood Vessels Using 2D Median Filter

6.7 Blood Vessels Extraction using Tophat Filter

6.8 Blood Vessels Extraction using Match Filter

6.9 Blood Vessels Extractions Using Symlet Wavelet

6.10 Extraction of Microaneurysms from Fundus Image

6.11 Extraction of Hemorrhages from Fundus Image

6.12 Extraction of Exudates from Fundus Image

6.13 Extraction of Cotton Wool Spots from Fundus Image

6.14 Glaucoma Detection

6.15 Artery, Vein and Capillaries

About the Book

This book is developed using MATLAB software. It is useful for the beginner's to start with simple step of DIP for Bio Medical and reaches to the advanced level. This book is useful for the degree and post graduate courses to learn and get hands on expertise on Bio Medical Images Processing using MATLAB environment. GUI based DIP for Bio Medical in MATLAB environment is the programmable and has the same way of designing programming GUI structure for DIP for Bio Medical as that of other programming languages such as VB.NET, JAVA etc. Thus it can be used to teach programming principals of Bio Medical DIP also.

This book is very much useful for engineering, mathematics and scientific communities. Many degrees and post graduate colleges are require a course based entirely on Bio Medical Image Processing in the curriculum. Contents of this book can be used directly for one semester of engineering and science courses.

- Introduction to biomedical image processing
- Introduction to Diabetic Retinopathy
- Experiments for detection of diabetic retinopathy
- Introduction to Glaucoma
- Experimental Part for detection of Glaucoma
- Coding

About the Authors



Ramesh R. Manza: Has completed M.Sc. Computer Science (1996), NET and SET (2002), Ph. D. in Computer Science (2006) and presently working as Assistant Professor in Department of Computer Science and Information Technology, Dr. Babasaheb Ambedkar Marathwada University, Aurangabad (MS) India. His area of specialization includes Bio-Medical Image Processing, Computer Vision, Nano-robotics, MEMS and Biometric. He has published around 215 papers at national and international platforms. He is leading two major research projects, awarded by UGC and DST on Diabetic Retinopathy. Total 25 students have been awarded M.Phil, 06 students awarded Ph. D. and 09 students are leading their Doctoral program under his guidance. He is recipient of Shikshak Pratibha, Vidhyaratna and Merit rank Third Award.



Manjiri B. Patwari: Worked as Assistant Professor in Institute of Management Studies and Information Technology, Dr. Babasaheb Ambedkar Marathwada University, Aurangabad (MS), India. She has completed M. C. A. and Ph. D. in Computer Science, Department of Computer Science and Information Technology, Dr. Babasaheb Ambedkar Marathwada University, Aurangabad. Her area of specialization is Bio-Medical Image Processing and Diabetic Retinopathy. She has published around 20 papers in reputed Journals and Conferences.



Yogesh M. Rajput: has completed M. Sc. Computer Science in 2012, M.Phil. Computer Science in 2014 and currently pursuing Ph. D. in Computer Science and presently working as Research Student in Department of Computer Science and Information Technology, Dr. Babasaheb Ambedkar Marathwada University, Aurangabad. His area of specialization is Bio-Medical Image Processing and Diabetic Retinopathy. He has published around 20 papers in reputed Journals and Conferences.



Deepali Rathod: She has completed M. Sc. Computer Science in 2012 from Department of Computer Science and IT, Dr. Babasaheb Ambedkar Marathwada University, Aurangabad (MS) India, M. Phil. Computer Science in 2014 from same Department, currently pursuing Ph. D. in Computer Science in Diabetic Retinopathy, she has Publication 05 papers in reputed Journals.



**SHROFF PUBLISHERS &
DISTRIBUTORS PVT. LTD.**

ISBN 13: 978-93-5213-285-0



9 789352 132850